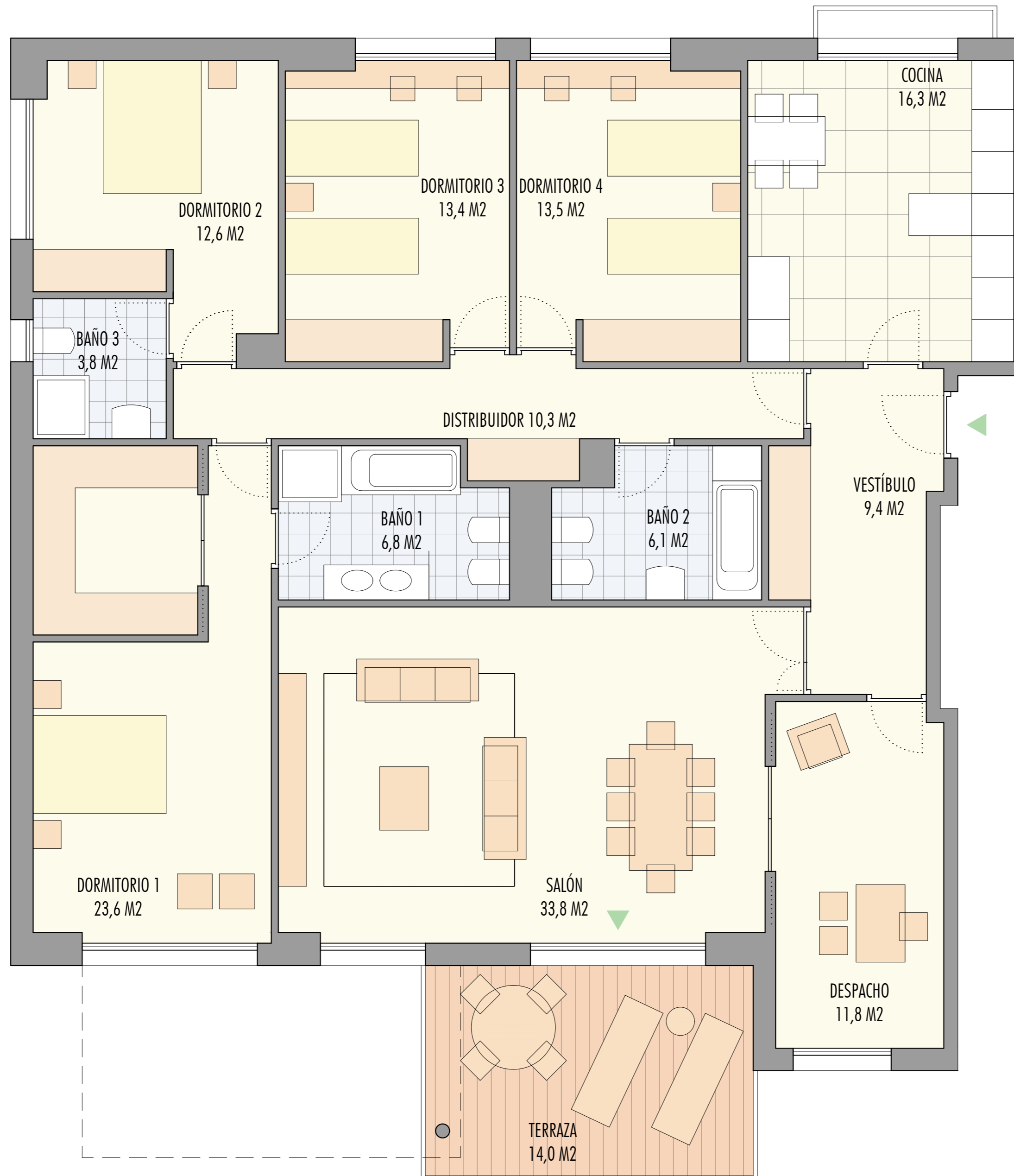
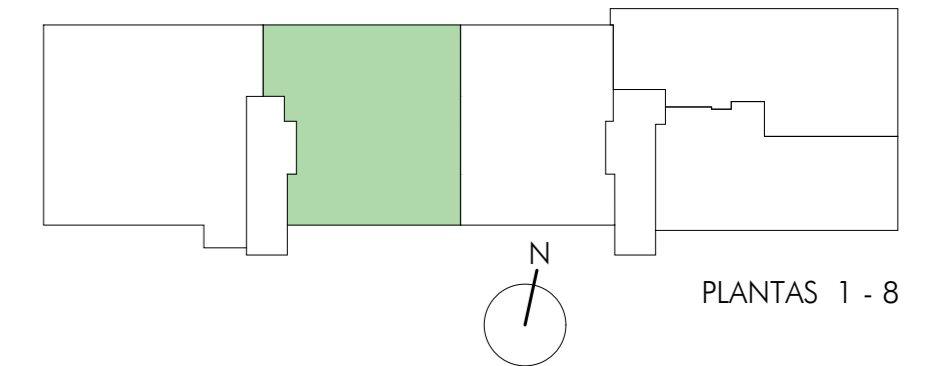


PLANTAS 1 - 7

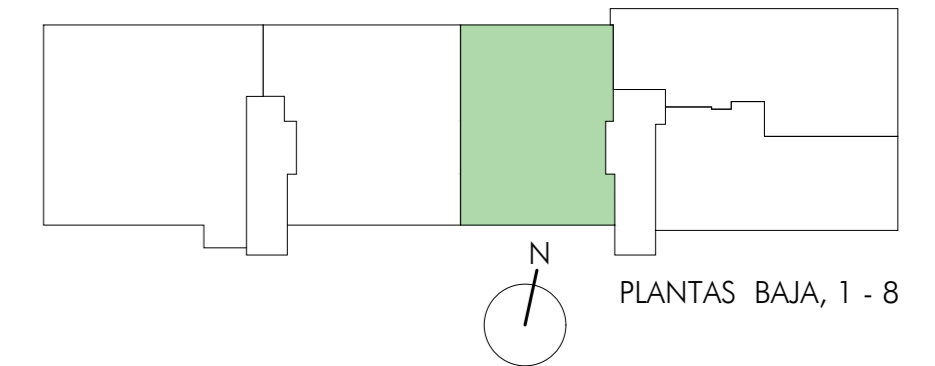
VIVIENDA TIPO 1 / 4D+E
superficie CONSTRUIDA - C/PPEC: 222,80 M²



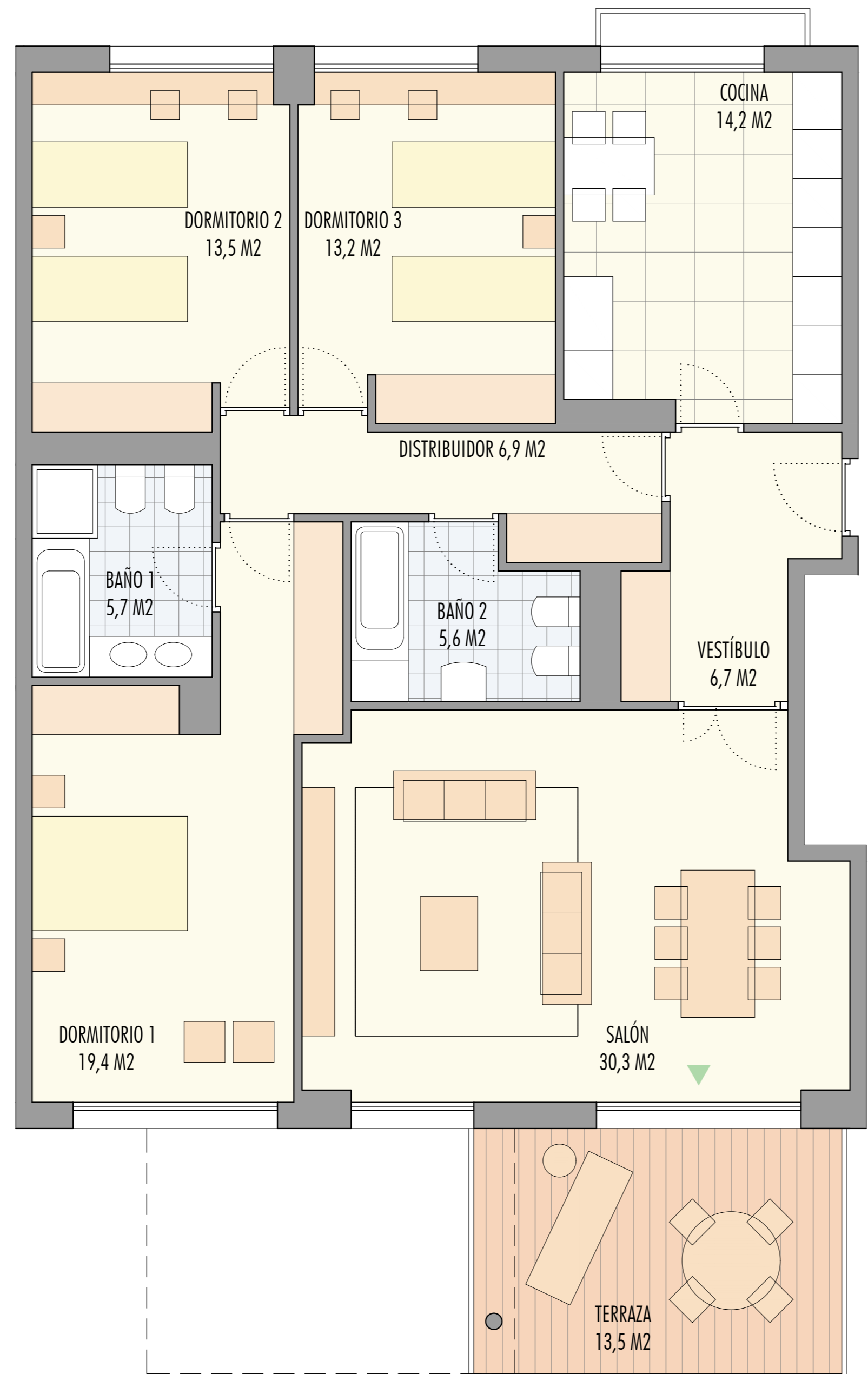


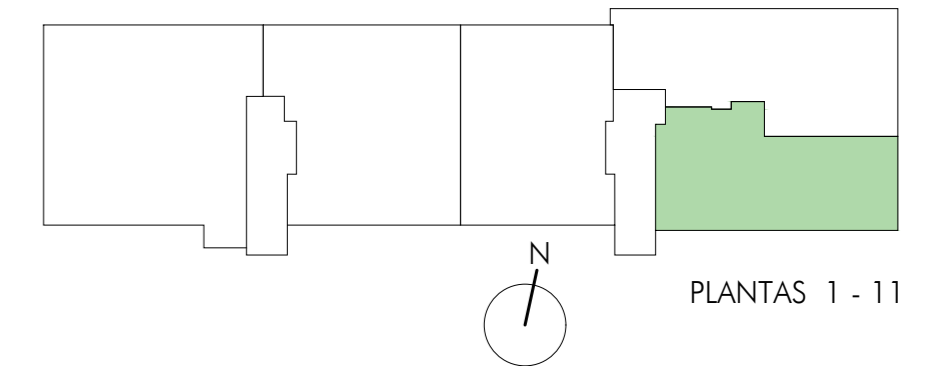
VIVIENDA TIPO 2 / 4D
superficie CONSTRUIDA - C/PPEC: 192,05 M²



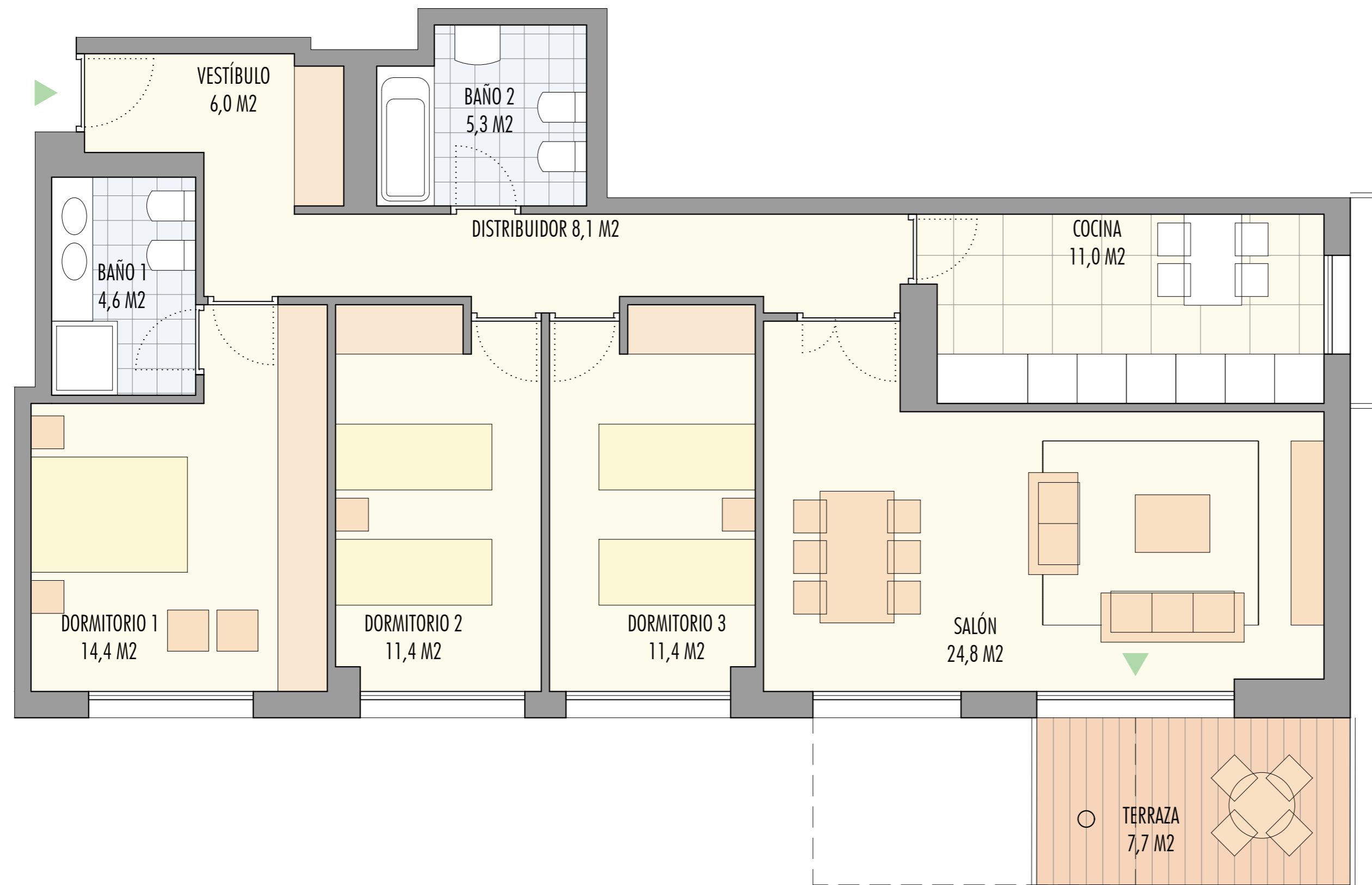


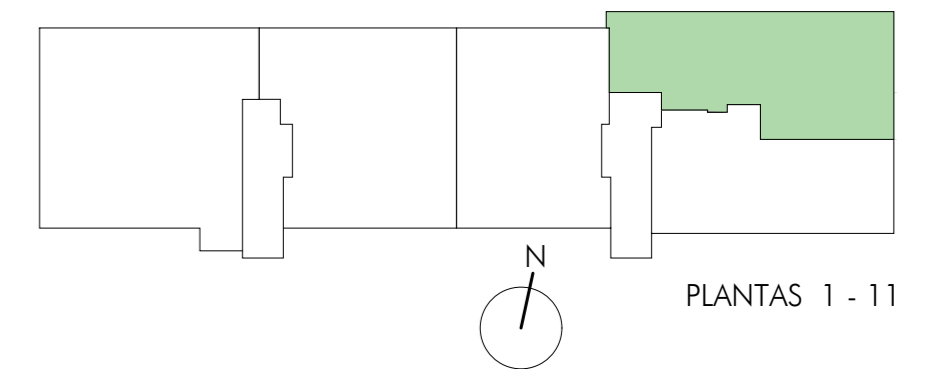
VIVIENDA TIPO 3 / 3D
superficie CONSTRUIDA - C/PPEC: 163,86 M²





VIVIENDA TIPO 4 / 3D
superficie CONSTRUIDA - C/PPEC: 132,99 M²

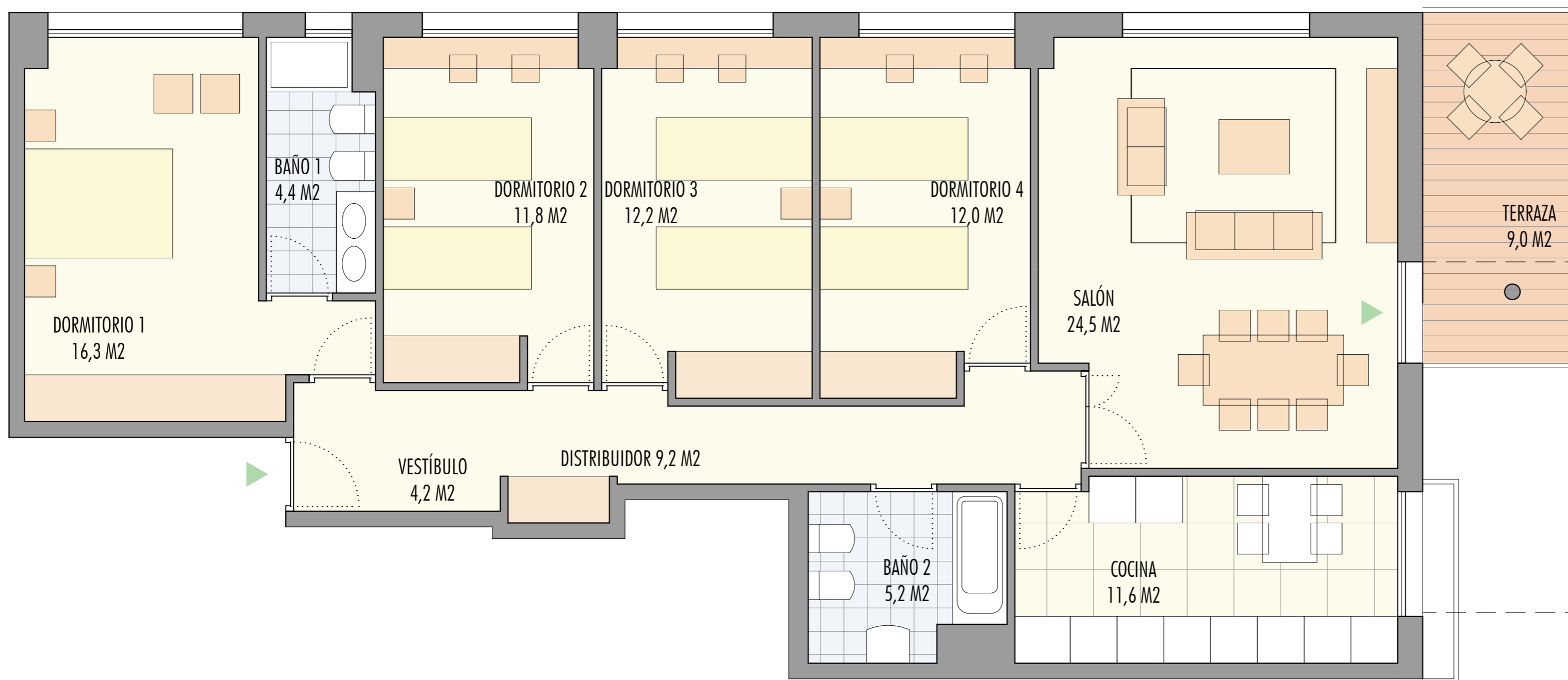


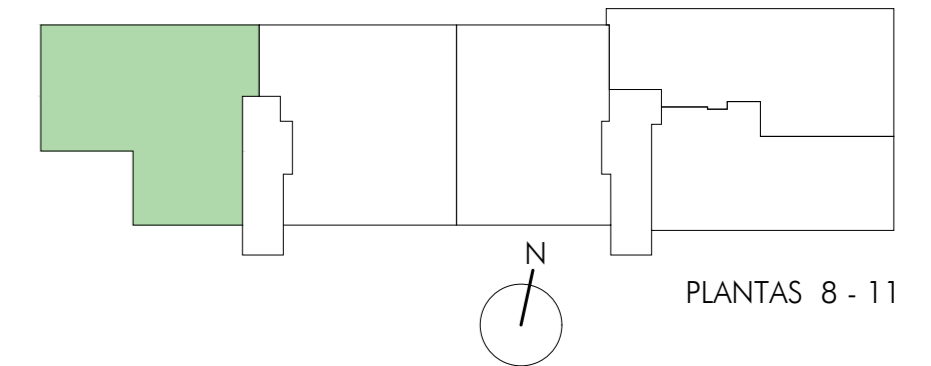


PLANTAS 1 - 11

VIVIENDA TIPO 5 / 4D

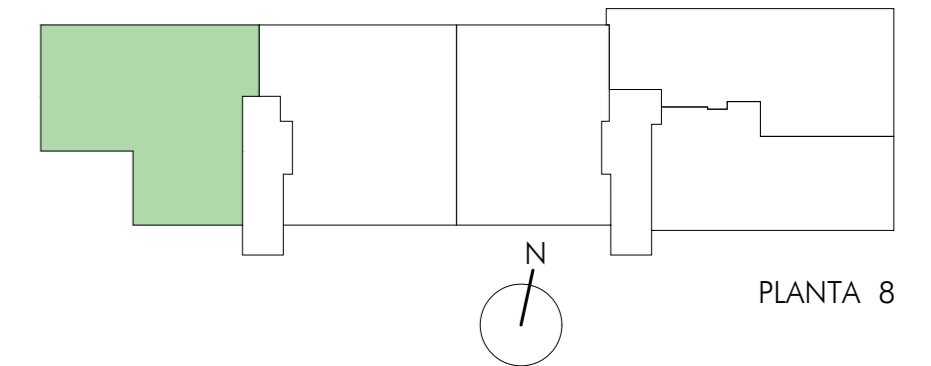
superficie CONSTRUIDA - C/PPEC: 152,93 M²





VIVIENDA TIPO 6 / 4D
superficie CONSTRUIDA - C/PPEC: 177,19 M²

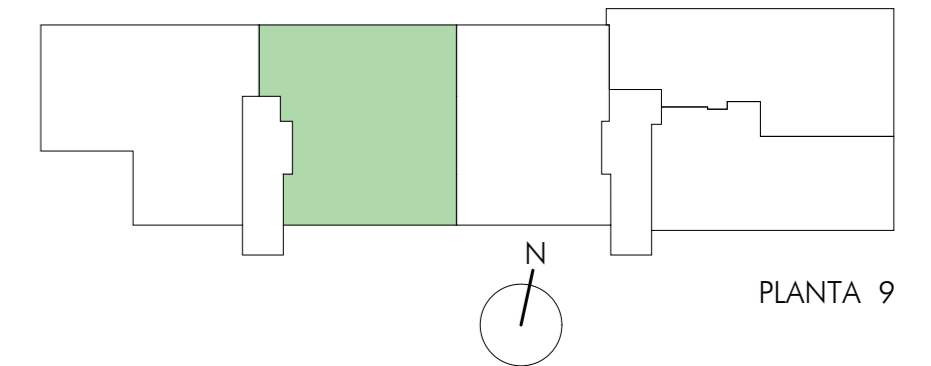




PLANTA 8

VIVIENDA TIPO 6* / 4D
superficie CONSTRUIDA - C/PPEC: 165,51 M²

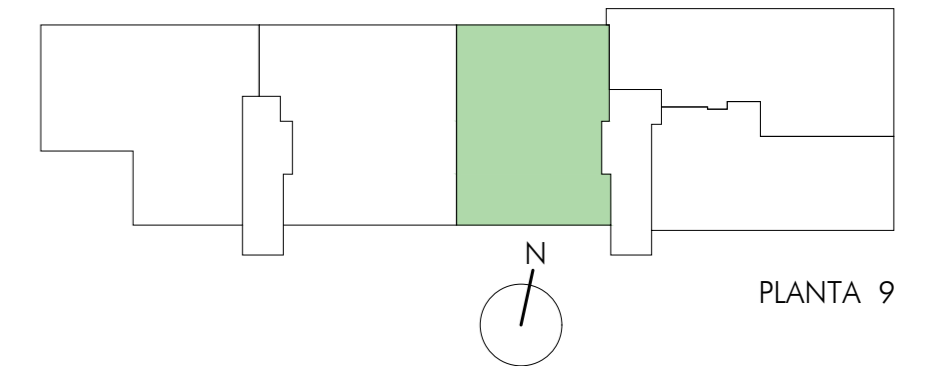




PLANTA 9

VIVIENDA TIPO 7 / 4D
superficie CONSTRUIDA - C/PPEC: 185,07 M²





PLANTA 9

VIVIENDA TIPO 8 / 3D
superficie CONSTRUIDA - C/PPEC: 153,06 M²

